



## PC Monitoring Software

### SW version 4.1.6

2 Changes in the version 4.1.6 .....	3
3 Changes in the version 4.1.5 .....	5
4 Changes in the version 4.1.4 .....	6
5 Changes in the version 4.1.3 .....	7
6 Changes in the version 4.1.2 .....	8
7 Changes in the version 4.1.0 .....	9
8 Changes in the version 4.0.0 .....	10
9 Changes in the version 3.15.0 .....	11
10 Changes in the version 3.14.0 .....	12
28 Notes .....	34

# 1 General information

## 1.1 Version information

This version contains several repairs and bug fixes.

## 1.2 Clarification of notation

**Note:** *This type of paragraph calls readers attention to a notice or related theme.*

**IMPORTANT:** This type of paragraph highlights a procedure, adjustment etc., which can cause a damage or improper function of the equipment if not performed correctly and may not be clear at first sight.

**Example:** This type of paragraph contains information that is used to illustrate how a specific function works.

# 2 Changes in the version 4.1.6

## 2.1 Repairs

### > General:

- » Pop-up keyboard – resolves an issue where the pop-up keyboard was not available in some windows (e.g. Setpoints)
- » Resolves an issue where Archive memo was messed up
- » Settings: Font: resolves an issue with missing option "Preferred language"
  - Fixed

### > Connection:

- » Resolves an issue with Multi off-line connection when offline site connection did not work properly after restarting the PC
- » Resolves an issue where templates of different sites were not loaded properly
- » Fixes an issue where an error message was displayed when closing a connection and changing Settings at the same time
  - Fixed

### > Setpoints:

- » Cell color- resolves an issue with displaying correct color of cells – cell are now colored according to their status
- » Resolves an issue with displaying correct hint color
- » MultiSetpoints – resolves an issue where setpoint was written to first controller only
  - Fixed

### > History/MultiHistory:

- » Fixes column width issues – the width will now remain set as custom and column with BIN/BOUT are displayed properly
- » Resolves issues where:
  - Connection to the controller was lost under certain conditions and opening History/MultiHistory window
  - The "Sd CommError" title was not displayed in full
  - Hints of BIN and BOUT columns were not shown properly
  - Hiding of columns and history records was not working properly
  - Index of Pre-Mortem history event was not correct
  - Column names were not moved correctly when moving columns
    - Fixed

- Line Diagram Editor:
  - Resolves an issue where:
    - Transparent picture was not updating properly
    - Values in Data grid object were not updated when column names was hidden
      - Fixed

# 3 Changes in the version 4.1.5

## 3.1 New Features

- Support of IntelliPro firmware 2.3.0 controller. Detailed information can be found in the related controller's guide

## 3.2 Repairs

- Connection:
  - Resolves an issue with opening a connection to controllers on Site with bigger amounts of controllers – connection is now finished properly
- Setpoints:
  - Resolves an issue with displaying values – data are displayed properly
    - Fixed
- Control:
  - Resolves an issue with displaying non-Latin-1 strings – strings are displayed properly
    - Fixed
- Multi History:
  - Resolves an issue with Page Up/Page Down keys using – scrolling works properly
  - Resolves an issue where an error message was displayed after saving changes in Settings
  - Resolves an issue where reading Multi History took a longer time
  - Resolves an issue with Read history – button is enabled properly
    - Fixed
- Single Line Editor
  - Properties
    - Resolves an issue with displaying label – label hiding works properly
    - Resolves an issue with NT style property – transparency works properly
  - Legacy – Generator Object – resolves an issue with displaying object – icon is visible properly
  - Trend - resolves an issue where the trend line was not displayed with the lowest value
    - Fixed
- Resolves an issue with opening .zst file – file is possible to open properly
  - Fixed

# 4 Changes in the version 4.1.4

## 4.1 Repairs

- Settings:
  - History – resolves an issue with hiding system records – records are hidden properly now
    - Fixed
- Control:
  - Resolves an issue with displaying alarm in ECU alarm list – alarm is displayed properly without any error message
    - Fixed
- Monitor:
  - Admin users – resolves an issue with user's access settings – changes are saved properly
  - Trend – resolves an issue with incorrect drawing of trend line
    - Fixed

# 5 Changes in the version 4.1.3

## 5.1 New Features

- Support of new firmware version with an extended number of binary PLC outputs and analog PLC outputs, detail information can be found in related controllers guide

## 5.2 Repairs

- Control:
  - Alarm list, Fault Code list- resolves an issue with displayed alarms – correct list and status is displayed now
    - Fixed
- Values:
  - Resolves an issue with displaying values – values were not displayed properly (random behavior) and it was necessary to reconnect to controller
    - Fixed
- Service timers:
  - Resolves an issue with correct displaying columns in dialog window
  - Resolves an issue with missing Service timers in menu
    - Fixed
- Cylinders:
  - Resolves an issue with displaying values in correct format
    - Fixed
- Help:
  - Resolves an issue with application crash when searched item was not found
    - Fixed

# 6 Changes in the version 4.1.2

## 6.1 Repairs

### > Settings:

» Miscellaneous – resolves an issue with automatic connection to a predefined site.

- Fixed

### > Resolves an issue with opening ".zst" files created in older version of IntelliMonitor 3.x.x.

**Note:** ".zst" files created in IntelliMonitor 4.1.0 and 4.0.0 cannot be opened in IntelliMonitor 4.1.2, the next version of IntelliMonitor will support opening ".zst" files.

» Fixed

### > History:

» Resolves an issue with displaying values in History window

- Fixed



# 7 Changes in the version 4.1.0

## 7.1 New Features

- Support of new firmware version with an extended number of binary PLC outputs, detailed information can be found in related controllers guide

## 7.2 Repairs

- Site connection:
  - Second breaker was not displayed properly on the IM2ISGSC firmware template
  - Object – LED-DBL Mains was displayed incorrectly in the IntelliMonitor layout.
    - Fixed
- Help:
  - The IntelliMonitor Help Home page was not displayed properly
    - Fixed
- Connection:
  - Error messages occurred when the application was closed while opening the controller connection
    - Fixed
- Application stabilization after optimization on Windows 10

# 8 Changes in the version 4.0.0

## 8.1 New Features

- Application optimization on Windows 10

## 8.2 Repairs

- "zst" files were not created properly
  - Fixed

# 9 Changes in the version 3.15.0

## 9.1 New Features

- Support of IBF-CU-Mobile 1.6.0 controller

# 10 Changes in the version 3.14.0

## 10.1 New Features: Skin style – Day/Night

- There is a possibility to define for one FW (controller) two options of Control windows template, one for Day and one for Night skin. It can be useful in poor lighting conditions.
  - The idea is
    - 1. Day ... shows light theme
    - 2. Night ... shows dark theme

### 10.1.1 Button "Switch to Day/Night skin"

- Use the button to switch between Day and Night skin template.

### 10.1.2 Single connection

The current default template (**cws**) is used for "Day" skin option. The Night option of template must be defined in a separate template (**cwsn**). It is possible to create Night skin from Day skin template:

1. Open existing template (a **cws** file) in the Line Diagram Editor
2. Change property Color or Icon skin style (e.g. for Buttons) of desired Objects as needed
3. Save template (File –> Save drawing to...) as Night skin option (**cwsn**).

User can switch created skins by button "Switch Skin style – Day/Night".

### 10.1.3 Multiple connection (Sites)

1. Night skins option for column templates (the templates for creating Control window of Site)

The current default template (**cwd**) is used for "Day" skin option. The Night option of template must be defined in a separate template (**cwdn**). It is possible to create Night skin from Day skin template:

1. Open existing template (a **cwd** file) in the Line Diagram Editor
2. Change property Color or Icon skin style (e.g. for Buttons) of desired Objects as needed
3. Save template (File –> Save drawing to...) as Night skin option (**cwdn**).

User can switch created skins by button "Switch to Day/Night skin".

2. Night skin option for Control windows of Site

If user creates a new site and connects to it, a new Control window of site is generated from column templates. The new Control window is generated for Day and Night skin option in two separate files.

- Day skin ... Default.cwd
- Night skin ... Default.cwdn

If column of Control window templates for site already exists, the Night skin template of the Night skin Control window is generated from them. Otherwise the default Day skin template is used. The Default.cwd or Default.cwdn can be modified.

**IMPORTANT: Whenever the user opens a connection, new site Control window is generated unless both templates contain flag – "edited by user". Therefore, when the layout of one of the Control window templates (e.g. Night) is modified by the user, the other one (e.g. Day) has to be edited as well. Otherwise both templates will be overwritten during next connection to the site.**

## 10.1.4 Name conventions of Controller window template files

- The Day skin file extensions
  - Multi connection ...\*.cwd
  - Single connection ...\*.cws
- The Night skin file extensions (formula: <day skin ext.> + 'n')
  - Multi connection ...\*.cwndn
  - Single connection ...\*.cwsn

Day skin template name: <TemplateName>.<extension> eg. ID-Marine.cwd

Night skin template name: <TemplateName>.<extension>N eg. ID-Marine.cwndn

## 10.1.5 Single connection

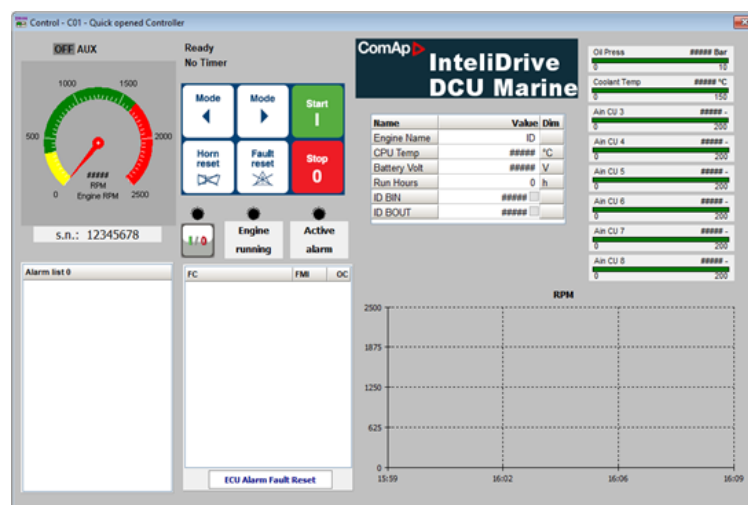


Image 8.1 An example of Day skin template

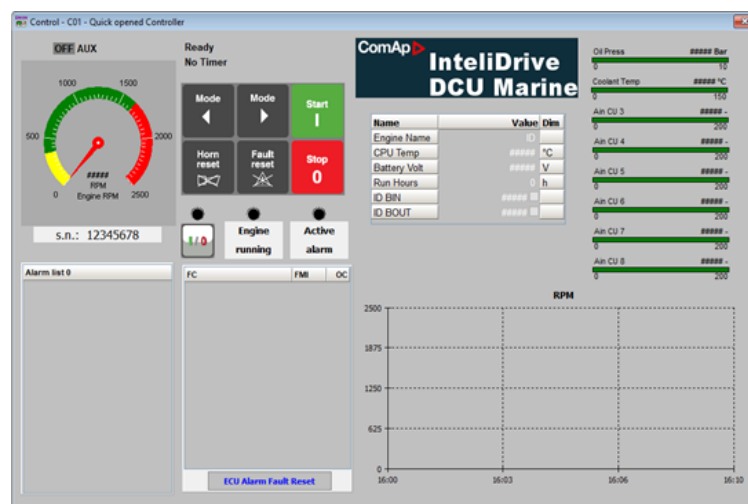


Image 8.2 An example of Night skin template

# 10.1.6 Multi connection (sites)

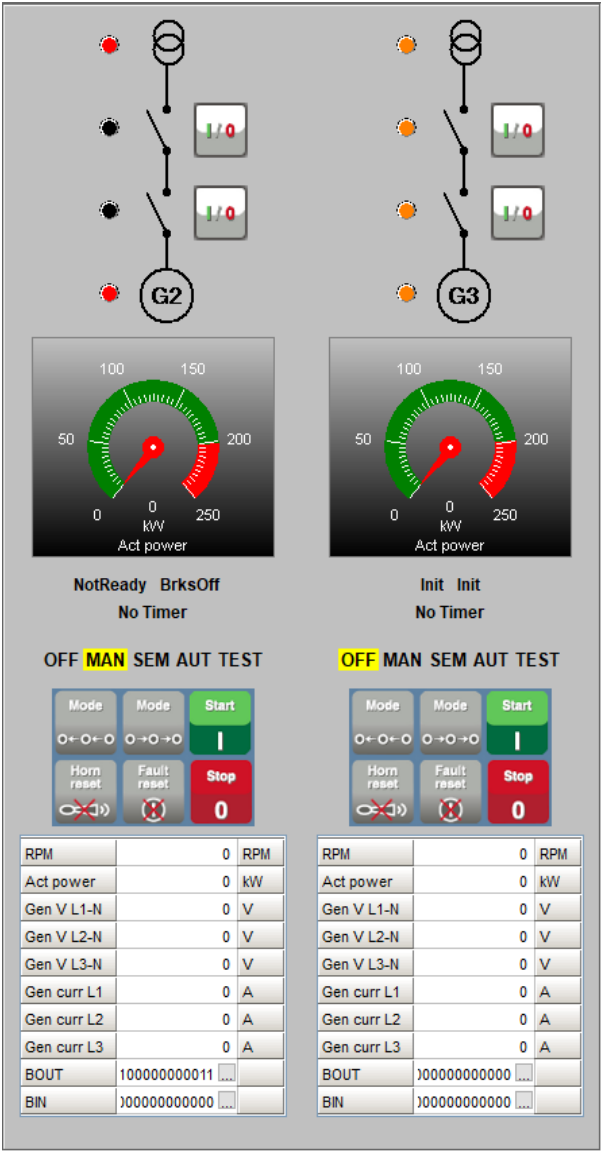


Image 8.3 An example of Day skin template

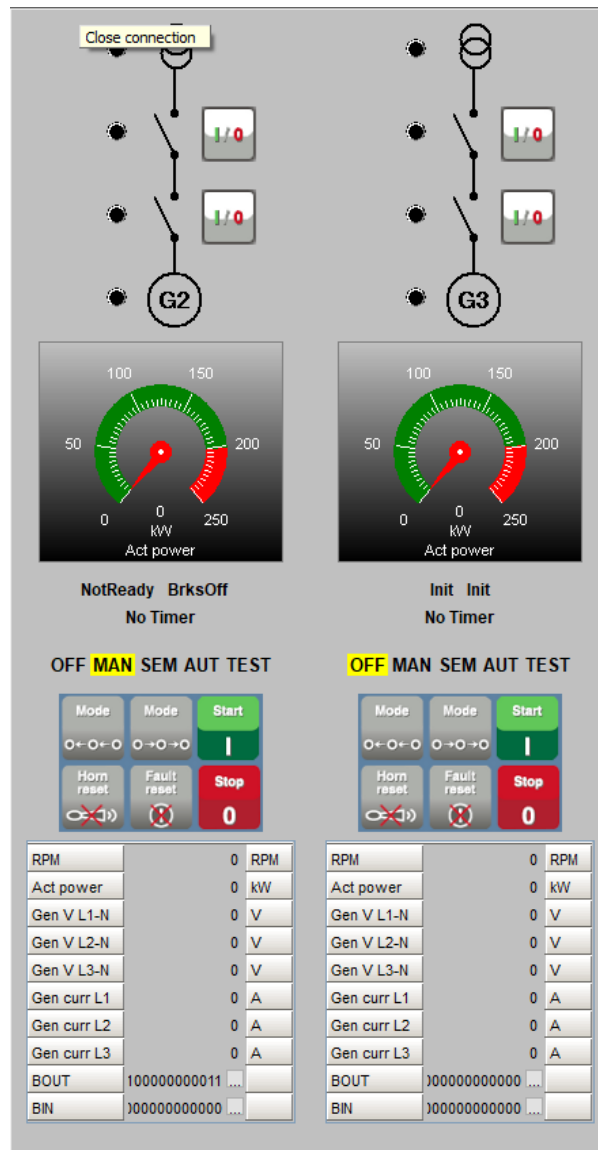


Image 8.4 An example of Night skin template

## 10.2 Repairs

- Setpoints – parameters of attributes with 3 decimal places had incorrect interpretation of OFF
  - » Fixed
- Functionality "Save archive and send them by email" was not working, error message was displayed
  - » Fixed
- Functionality "Deactivate the password for current controller" when user was connecting via Quick-connect to controller, was not working correctly
  - » Fixed
- Connection improving – on a site with more controllers a connection had been randomly rejected by few controllers. The error message "Wrong access code" appeared although when all access codes were correct.
  - » Fixed

# 11 Changes in the version 3.13.1

## 11.1 New Features

- Support of European Grid codes compatible controllers

## 11.2 Repairs

- Access violation when closing IMON during opening connection
  - » Fixed
- Duplicate user name can exist in some case
  - » Fixed
- Confirmation message of Delete password for selected user button shows incorrect user
  - » Fixed
- Delete password for selected user" button does not reset the password of selected user
  - » Fixed
- Export site to file does not save the file correctly
  - » Fixed
- Access violation messages while Admin User table is open
  - » Fixed
- Not properly visible IntelliMonitor logo in About window
  - » Fixed



# 12 Changes in the version 3.13.0

## 12.1 New Features

- Support of European Grid codes compatible controllers

# 13 Changes in the version 3.12.2

## 13.1 New Features

- AirGate ID font update. New characters are now supported in AirGate ID, new font is now used in IntelliMonitor make new AirGate ID easily readable

## 13.2 Repairs

- Access code randomly rejected on 22CUs site
  - Fixed

# 14 Changes in the version 3.12.1

## 14.1 Repairs

- Cannot launch more than one instance of IntelliMonitor from WebSupervisor UriLauncher - fixed
- Line Diagram Editor, SoftKey Command: Commands property not available - fixed
- Access Violation error when using "save all as" button to save site to a non default folder - fixed

# 15 Changes in the version 3.12.0

## 15.1 New features

- Support of ID-DCU-Marine 3.0.0 controller
- Support of extended history (up to 4096 records) and text records in the history
- Multi ECU support
  - ECU identification (name, index, address) in the Alarmlist
  - ECU groups in Values
- Service timers - Service time SD support in IS2GAS 1.3.0

## 15.2 Repairs

- It was not possible to open Cylinder temperatures bargraphs for ISGAS 1.2.0
  - Fixed

# 16 Changes in the version 3.8.0

## 16.1 New features

- Support of IntelliSys GAS 1.2.0 controller
- Support of updated Alarm list
  - » In Alarm list is now displayed source address of ECU module. It is important when more ECUs are in configuration

## 16.2 Repairs

- It was unable to change Access code. Error message is displayed.
  - » Fixed
- It was possible to add more than 32 controllers into site. It is not correct, actual limit is 32 controllers
  - » Fixed
- In Line Diagram Editor, there was wrong behaviour of parameters setting for Analog meter. When lower limit of scale was set to 400 or higher, this limit was swt to 0.
  - » Fixed

# 17 Changes in the version 3.4.0

## 17.1 New features

- Command prompt support
  - IntelliMonitor can be started using command prompt. It can accept connection parameters to open connection defined in command prompt automatically. This feature allows to open IntelliMonitor from WebSupervisor and automatically connect to controller selected in WebSupervisor.

## 17.2 New features in PLC Monitor

- Support of PLC locking
  - Some controllers supports individual locking of PLC sheets. PLC Monitor support this new feature - show content of locked PLC sheets

## 17.3 Repairs

- Wrong IntelliMonitor icon on Windows task bar
  - Fixed

# 18 Changes in the version 3.2.0

## 18.1 New features

- Updated templates for IL-NT-TLC-DC 1.1
- Support of IGS-NT-BC-MINT application in templates
- Support of new IS2GASXX templates
- Support of IGS-NT-PSC controllers in templates
- Support of IBF-Mobile controllers in templates

# 19 Changes in the version 3.1.2

## 19.1 New features

- Support of IL-NT-TLC-DC 1.1
  - Support of new controller IL-NT-TLC-DC 1.1

## 19.2 Repairs

- Incorrect Templates assignments
  - For some controllers there was wrong assignment of templates (wrong schematic diagram was displayed).
- Problem to connect to IL-CU controllers
  - Unable to connect to IL-CU controllers



# 20 Changes in the version 3.1.1

## 20.1 Repairs

- Empty Control window
  - In some cases user gets empty Control window due to not up-to-date files in installation package - fixed

# 21 Changes in the version 3.1.0

## 21.1 New features

- Support of new extension module
  - New extension module identification (AIO9/1 ) is supported in Controller/Archive info window

## 21.2 New features in SCADA

- Updated design of Open/Close buttons for IntelliPro controller

## 21.3 Repairs

- Bug in user SCADA in full screen mode
  - Incorrect layout of user SCADA screen in full screen mode - fixed
- Incorrect display of setpoint value
  - Value of some setpoints (with text limit) is displayed as number, not as text - fixed

# 22 Changes in the version 3.0.6

## 22.1 New features

- Support for some custom branches of controllers

## 22.2 New features in SCADA

- New CWS/CWD templates for IntelliPro 1.5 and higher
  - Added new CWS/CWD templates (SCADA) for IntelliPro 1.5 and higher with CB1 Open/Close buttons

## 22.3 New features in PLC Monitor

- Support of new PLC block - Force Mem
  - New PLC block Force Mem was added to some versions of controllers

# 23 Changes in the version 3.0.5

## 23.1 New features

- Support for external module I-AIO9/1
  - Correct identification of external module I-AIO9/1 in Controller/Archive info window.

## 23.2 New features in SCADA

- New buttons for IntelliPro
  - Added Open and Close buttons for IntelliPro Controller

## 23.3 Repairs

- IntelliMonitor freezes
  - IntelliMonitor freezes when started with empty Sites folder.

# 24 Changes in the version 3.0.4

## 24.1 New features

- New configuration table for BF (ver. 5) supported
  - Support configuration table for BT controller ver. 5 including 3D map PLC block.

# 25 Changes in the version 3.0.3

## 25.1 New features in SCADA

- Templates for ID-Mobile and ID-Mobile Logger
  - New templates (Automatic SCADA and Control window) for ID-Mobile and ID-Mobile Logger

## 25.2 Repairs

- Column width in Open connection window
  - Width of Sites and Connection columns were automatically changed (sometimes to zero width) - fixed
- Problem to open locked configuration offline
  - Unable to unlock locked archive off-line (enter password) - fixed

# 26 Changes in the version 3.0.2

## 26.1 New features

- New Open connection window
  - Open connection window is now automatically displayed when IntelliMonitor starts or when connection is closed.

## 26.2 New features in SCADA

- Extended indication by breaker object
  - Breaker object now indicate also wrong status of breaker. It is for example in case when controller expects breaker in opened position but feedback reports closed position. Breaker position is still displayed as it is reported by controller (from feedback). Small exclamation mark icon is displayed behind breaker.
- New instrument Engine Value Meter RPM
  - This is new analog indicator used for Drive controllers only with predefined properties.
- New instrument Serial number
  - This is new indicator used to display serial number of controller.
- Added Remote switches for Drive controllers
  - Remote switches object is now added for Drive controllers (in iD tab).

# 27 Changes in the version 3.0

## 27.1 New features

- Automatic connection to selected site
  - New option in Settings – Miscellaneous. It is possible to select type of connection to site when IntelliMonitor starts. New option is to select site from the list of sites available to automatically connect to this site. Last used type of connection (Direct, AirGate...) is used. IntelliMonitor can be also automatically switched into fullscreen mode where only SCADA screen is displayed.
- New icons added
  - New icons added to Icon bar to start GenConfig, PLC Monitor and Line diagram Editor quickly.

## 27.2 New features in SCADA

- New - Login button
  - Login button instrument provide similar functionality as Login button in IntelliMonitor Icon bar. This Login button can be defined to login into one specific controller or to all controllers available on site.
- New - Soft Key Command button
  - This button has similar function as Soft Key - SoftKeyCommand on IntelliVision 5 and 8 external displays (buttons below the LCD). Wide range of properties could be used to fully customize this buttons in SCADA.
- Indication of interrupted communication
  - Active objects in SCADA has new type of indication of interrupted communication with controller. Different types of indications are used for different objects. Objects like LED, BusBar, Graphic element, Breaker, Remote switches etc use „?" mark displayed in front to indicate its unknown status. Objects like Meters or CustomStatus uses „#####" characters instead measured/indicated value. Buttons are not highlighted when mouse cursor is place on it.

## 27.3 New features in PLC Monitor

- Activation
  - PLC Monitor is now available without any activation process so can be used immediately after installation without any limitations.
- Integrated Find function
  - Find box was integrated into instrument bar so no extra window is used for this function.
- Hints
  - Hints functionality was improved. Better position for hint window is used to not hide PLC block under mouse pointer.

## 27.4 Repairs

- Problem with object address
  - When address of Panel object was changed (in Line Diagram Editor), addresses of all objects inside this Panel are changed automatically to the same ones as Panel object has. Problem was with objects Graphic element, Busbar and Communication Status where address was not automatically changed.



- No record into history log caused by setpoint change
  - No record was added into the history log when setpoint was changed by double click on value in Original settings column. Now it is fixed so history record is added when setpoint was changed by entering new value into box (by keyboard or mouse) or by double click on Original settings value.
- MasterGrid in Line Diagram Editor in Fullscreen Mode
  - MasterGrid is now displayed correctly in Fullscreen mode during SCADA editing in Line Diagram Editor

# 28 Notes

## 28.1 Document history

Revision number	Related sw. version	Date	Author
26	4.1.6	7.9.2023	Simona Krejčí
25	4.1.5	10.10.2022	Simona Krejčí
24	4.1.4	29.3.2022	Simona Krejčí
23	4.1.3	25.2.2022	Simona Krejčí
22	4.1.2	13.12.2021	Simona Krejčí
21	4.1.0	5.10.2021	Simona Krejčí
20	4.0.0	29.6.2021	Simona Krejčí
19	3.15.0	29.4.2021	Simona Krejčí
18	3.14.0	23.9.2020	Simona Krejčí
17	3.13.1	16.7.2019	Jakub Šafanda
16	3.13.0	27.3.2019	Adam Hraban
15	3.12.2	18.10.2018	Adam Hraban
14	3.12.1	3.8.2018	Adam Hraban
13	3.12.0	12.1.2018	Dana Salingerová
12	3.8.0	26.4.2017	Jakub Šafanda
11	3.4.0	28.3.2017	Jakub Šafanda
10	3.2.0	12.4.2016	Jakub Šafanda
9	3.1.2	30.7.2015	Jakub Šafanda
8	3.1.1	22.5.2015	Jakub Šafanda
7	3.1.0	5.5.2015	Jakub Šafanda
6	3.0.6	13.1.2015	Jakub Šafanda
5	3.0.5	6.10.2014	Jakub Šafanda
4	3.0.4	20.5.2014	Jakub Šafanda
3	3.0.3	10.12.2013	Jakub Šafanda
2	3.0.2	22.11.2013	Jakub Šafanda
1	3.0	17.5.2013	Jakub Šafanda